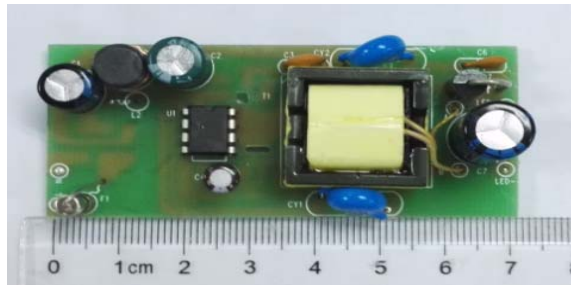


Subject
OB3398EPAP Demo Board Manual

Board Model: LD18W3398E.1626

Doc. No.: OB_DOC_DBM_3398EP01



72mm (L) *32mm (W) *21mm (H)

Key Features

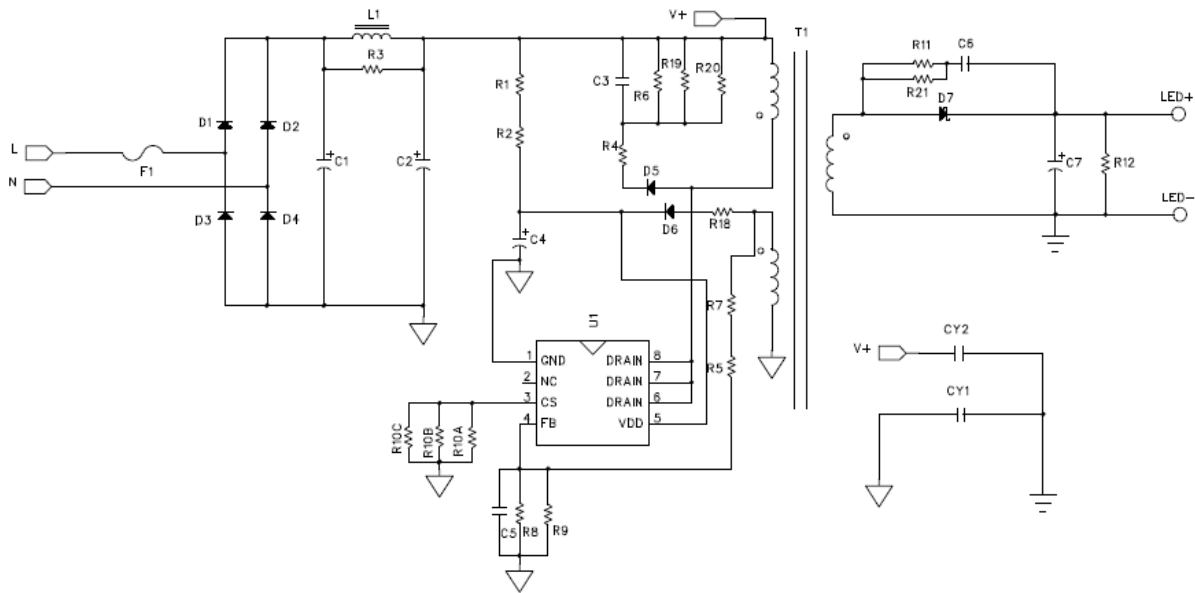
- Cost effective and simplified system design
- Accurate primary-side constant current controller without secondary side control and opto-coupler
- Small size for 18W LEDs lighting (L*W = 72mm*32mm)
- Constant voltage(CV) when output is open
- Audio noise free operation
- Short circuit protection, open circuit CV protection and over temperature protection

Revision History

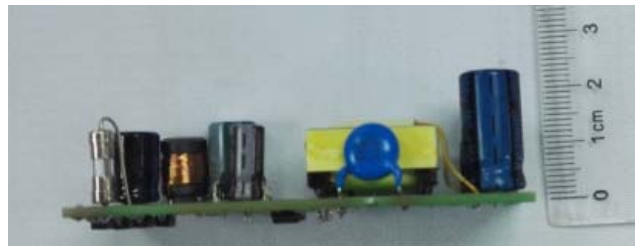
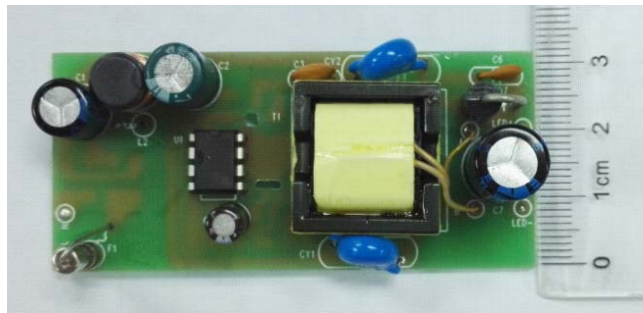
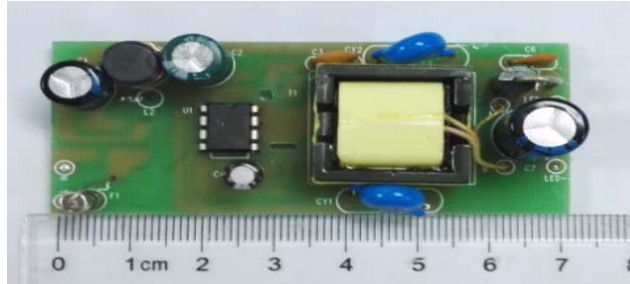
Revise Date	Version	Reason/Issue
2016-07-01	00	First issue
2016-10-24	01	Updated Load CC data

1 LED Lighting Information

2.1 Schematic



2.2 Module Snapshot



2 Performance Evaluation

Characterization Results Summary

Test Item	Test result
1. Input characteristics	
Efficiency (230 Vac, Full load)	83.84%
2. Output characteristics	
Current overshoot	0%
3. Time sequence (170Vac, Full load)	
Turn on delay time	240ms
4. Protections	
Short Circuit protection	OK
Open Circuit protection	OK
Over Temperature protection	OK

Disclaimer

On-Bright Electronics reserves the right to make corrections, modifications, enhancements, improvements, and other changes to its documents, products and services at any time and to discontinue any product or service without notice. Customers should obtain the latest relevant information before placing orders and should verify that such information is current and complete.

This document is under copy right protection. None of any part of document could be reproduced, modified without prior written approval from On-Bright Electronics.