

Subject
OB3392K Demo Board Manual

Board Model: LED40V0.45A - OB3392K.00

Doc. No.: OB_DOC_DBM_A_3392K01



Key features:

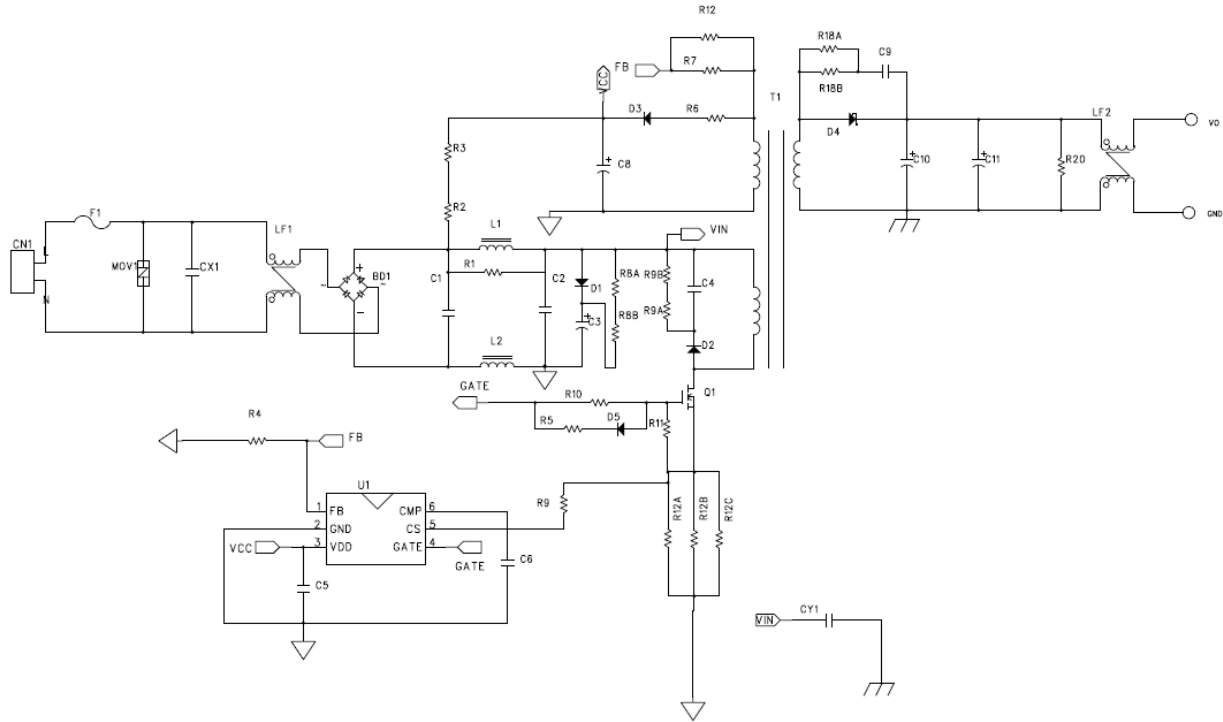
- Primary-side control with single stage PFC for LED driver
- Minimum BOM component amount
- Power factor >0.9
- THD meet IEC61000-3-2 Class C
- Short circuit protection
- Meet EN55015 & FCC Part 15 EMI

Revision History

Revise Date	Version	Reason/Issue
2013-12-04	00	First issue
2014-01-21	01	BOM update to meet spec

1. LED Module Information

1.1. Schematic



1.2. LED Module Snapshot



SIZE: 218mm (L) x17mm (W) x10mm (H)

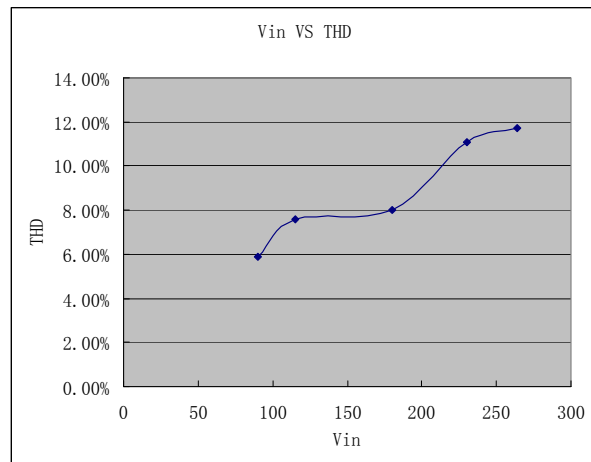
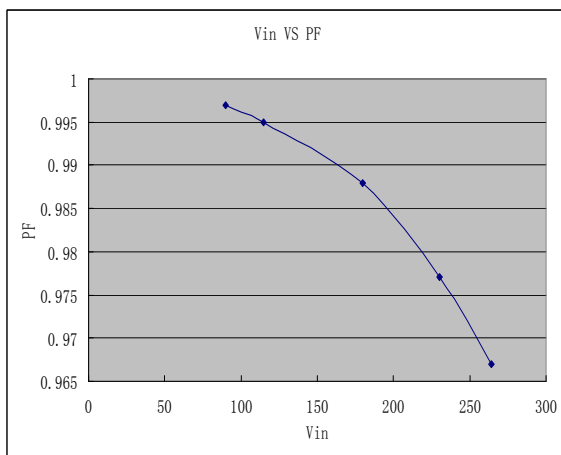
3.1. Input Characteristics

3.1.1. Efficiency

Table. 1 Efficiency under full load

Input voltage	90V/60Hz	115V/60Hz	180V/50Hz	230V/50Hz	264V/50Hz	Spec.	Test result
Output 40V	87.22%	88.49%	88.94%	87.96%	87.04%	> 86%	Pass

3.1.2. Power Factor & THD



Disclaimer

On-Bright Electronics reserves the right to make corrections, modifications, enhancements, improvements, and other changes to its documents, products and services at any time and to discontinue any product or service without notice. Customers should obtain the latest relevant information before placing orders and should verify that such information is current and complete.

This document is under copy right protection. None of any part of document could be reproduced, modified without prior written approval from On-Bright Electronics.