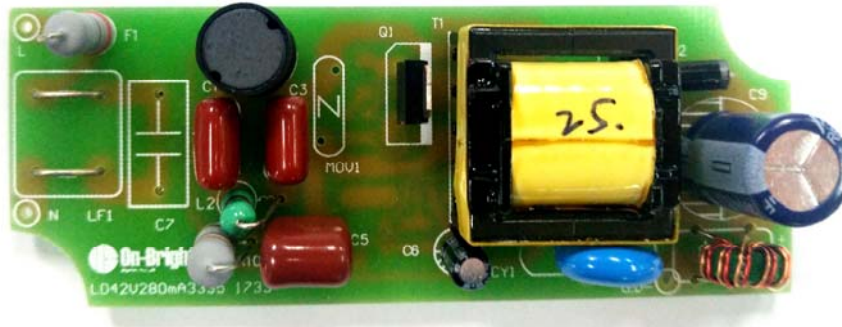


**Subject**  
**OB3335A Demo Board Manual**

Board Model: LD42V280mA3335 1733  
Doc. No.: OB\_DOC\_DBM\_3335A00



**Key features:**

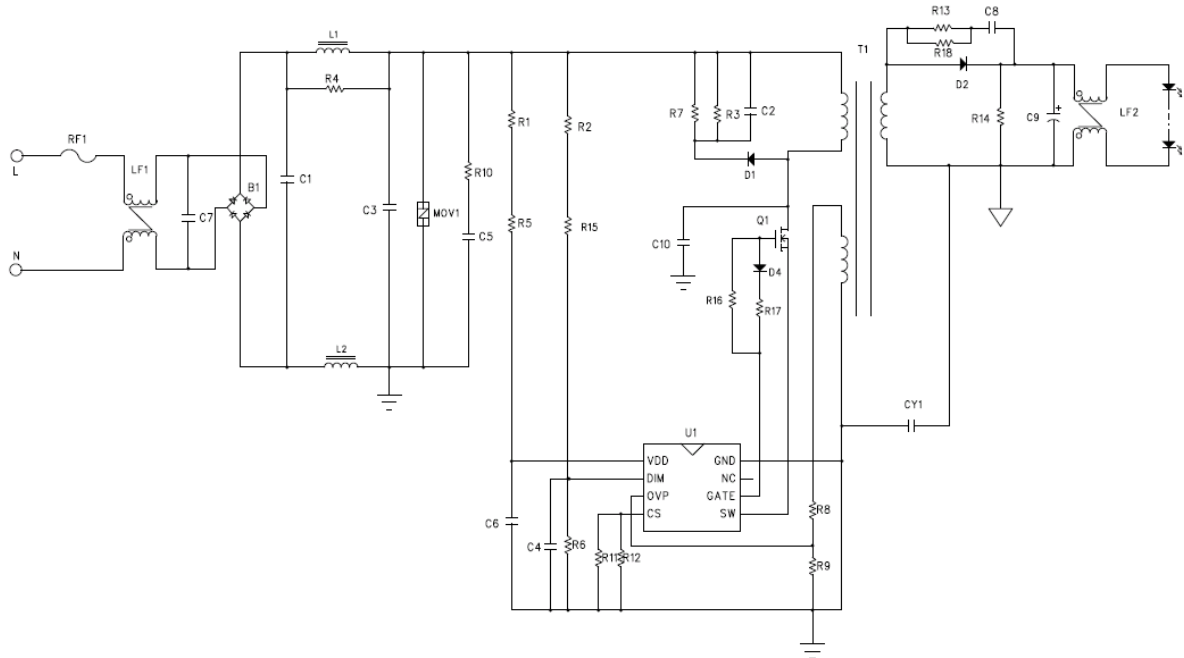
- Single stage PFC structure with flyback application
- QR mode to achieve high PF (>0.95)
- Low system cost
- High precision constant output current (<±5%)
- LED open/short protection, over temperature protection.
- Pass FCC PART15 CLASS B

**Revision History**

Revise Date	Version	Reason/Issue
2018/06/25	00	First issue

# 1. Board Information

## 1.1. Board Schematic



## 1.2. Module Snapshot

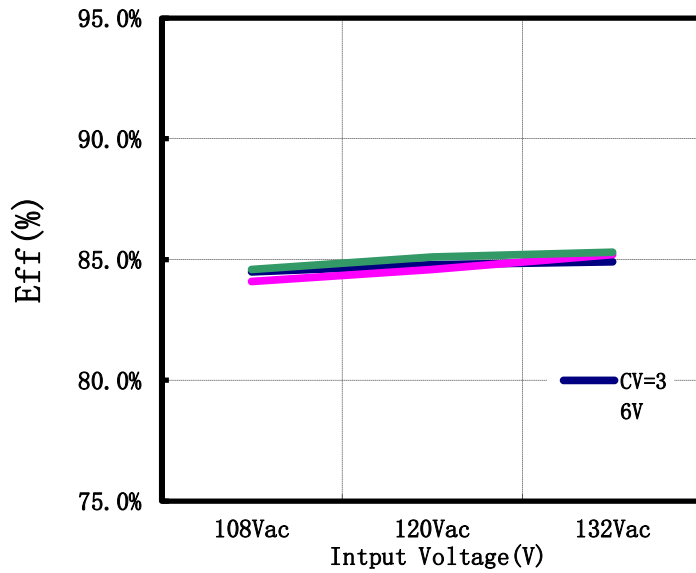


**Size: 83mm(L) \* 31mm(W) \* 23mm(H)**

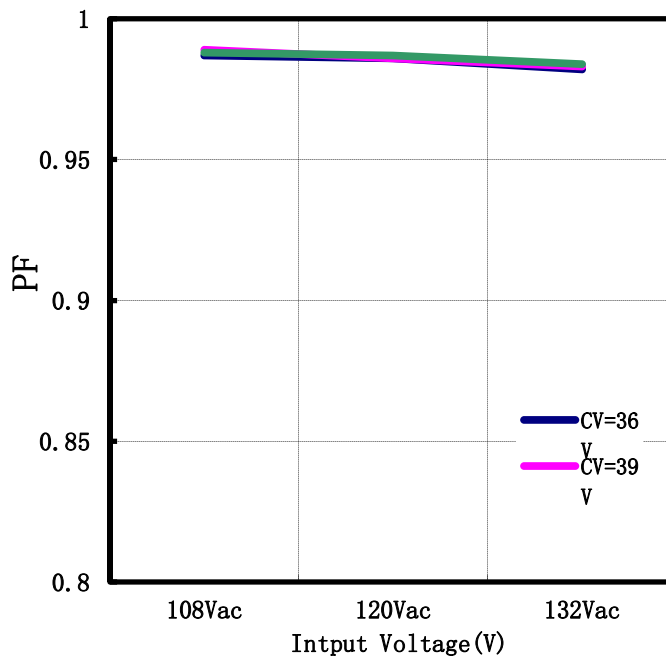
## 2. Performance Evaluation

### 2.1. Input Characteristics

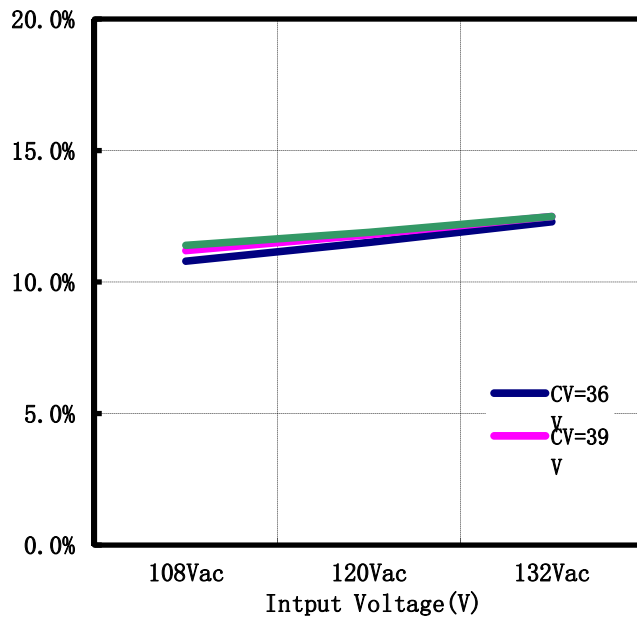
#### 3.1.1 Efficiency



#### 3.1.2 Power factor at full load



### 3.1.3 THD



### Disclaimer

On-Bright Electronics reserves the right to make corrections, modifications, enhancements, improvements, and other changes to its documents, products and services at any time and to discontinue any product or service without notice. Customers should obtain the latest relevant information before placing orders and should verify that such information is current and complete.

This document is under copy right protection. None of any part of document could be reproduced, modified without prior written approval from On-Bright Electronics.