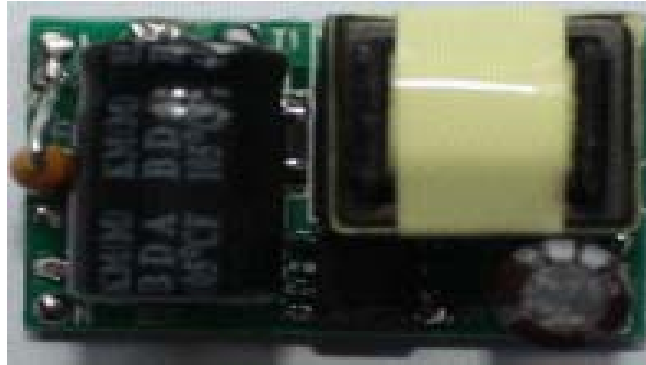


Subject**OB3652M Demo Board Manual**

Board Model: LD12V0.3A3652M.00

Doc. No.: OB_DOC_DBM_3652M01

**Key Features**

- Cost effective and simplified system design
- Without auxiliary winding, primary no RCD, second no RC design
- Accurate primary-side constant current controller without secondary side control and opto-coupler
- Small size for GU10/E27 1x1W to 3x1W LEDs lighting (L*W =25mm*16mm)
- High Precision output current regulation
- Audio noise free operation
- Short circuit protection, over voltage protection and over temperature protection

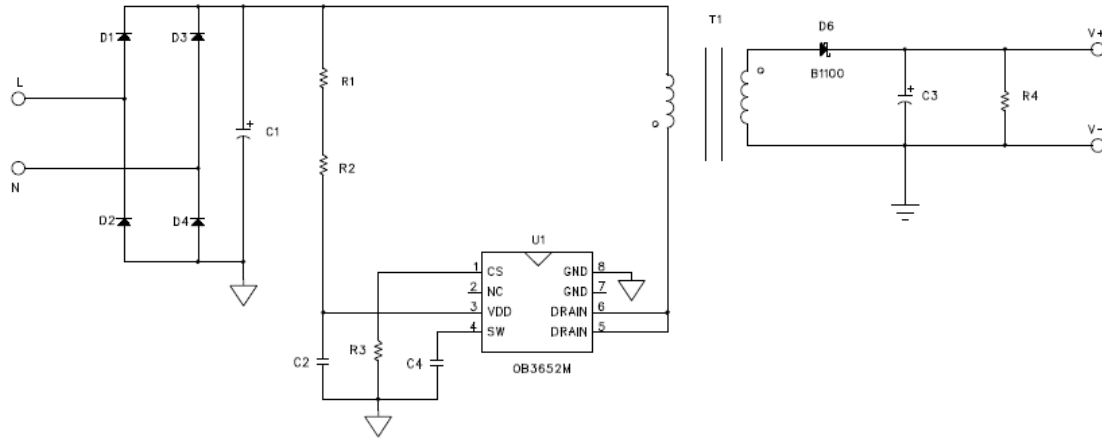
Revision History

Revise Date	Version	Reason/Issue
2013-8-29	00	First issue
2020-4-9	01	Add C4 between Pin SW and GND

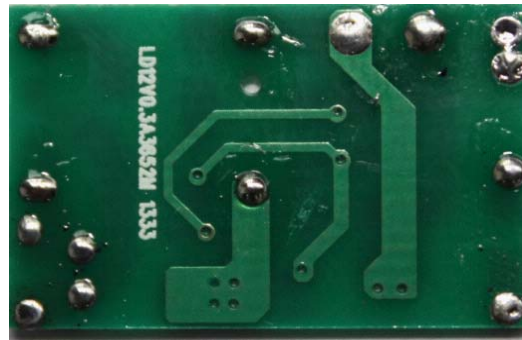
■

1 LED Lighting Information

2.1 Schematic



2.2 Module Snapshot



2 Performance Evaluation

Characterization Results Summary

Test Item	Test result
1. Input characteristics	
Efficiency (115/230 Vac,3LEDs load)	81%/77.5%
2 .Output characteristics	
Current overshoot	0%
3. Time sequence (90Vac, Full load)	
Turn on delay time	57mS
4. Protections	
Short Circuit protection	OK
Over Voltage protection	OK
Over Temperature protection	OK

Disclaimer

On-Bright Electronics reserves the right to make corrections, modifications, enhancements, improvements, and other changes to its documents, products and services at any time and to discontinue any product or service without notice. Customers should obtain the latest relevant information before placing orders and should verify that such information is current and complete.

This document is under copy right protection. None of any part of document could be reproduced, modified without prior written approval from On-Bright Electronics.