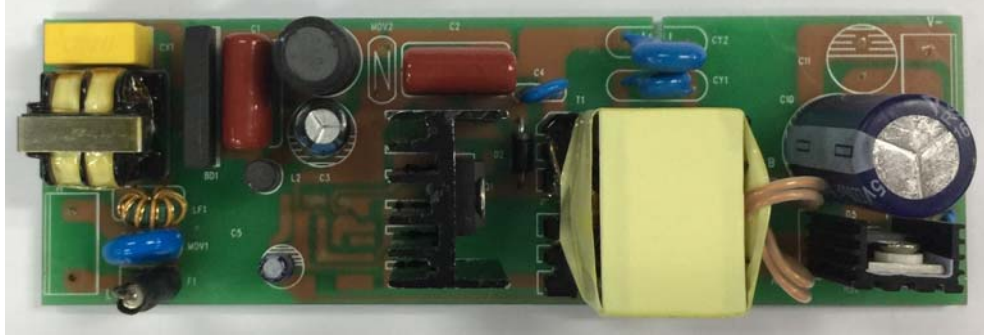


Subject
OB3636A Demo Board Manual

Board Model: LD24V2.5A3636.00

Doc. No.: OB_DOC_DBM_3636A00



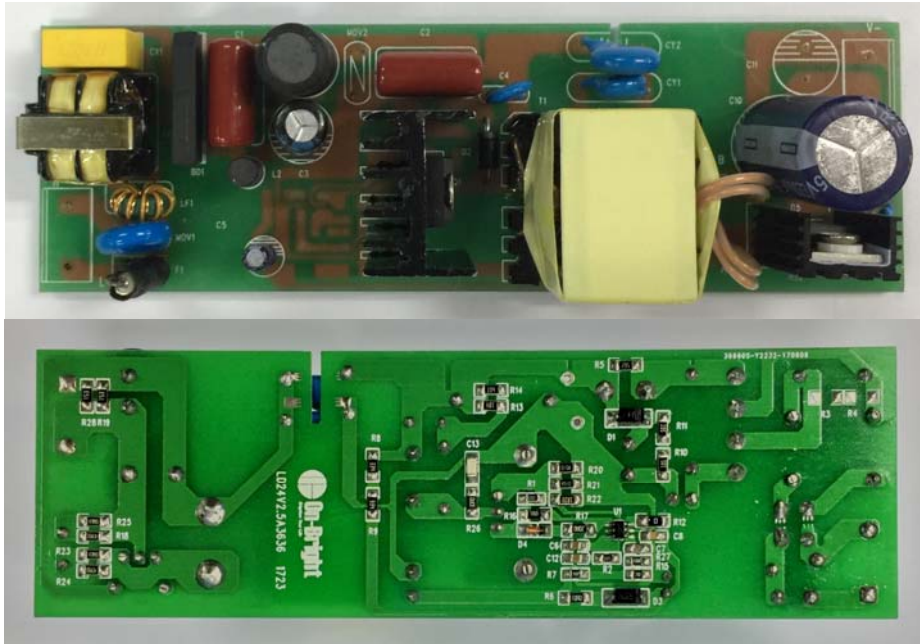
Key Features

- Isolated and primary-side constant voltage controller with $\pm 5\%$ regulation
- Efficiency more than 85%@115/230Vac,full load
- Turn on delay time<1Sec.@90Vac,full load
- Power factor >0.95 and THD<10% @full load
- No load standby power under 500mW@264Vac
- EMI passed EN55022 and FCC Part15 Class B test with more than 6dB margin
- Surge passed 2kV differential mode and 4kV common mode

Revision History

Revise Date	Version	Reason/Issue
2018-10-10	00	First issue

2.4 Module Snapshot



Length : width : height=137mm : 43mm : 26m

3 Performance Evaluation

Performance Highlights

- No load standby power under 500mW@264VAC
- Efficiency more than 87%@115VAC&230VAC, Full load
- EMI passed EN55022 and FCC Part15 Class B test with more than 6dB margin.

Characterization Results Summary

Test Item	Test result
1. Input characteristics	
Standby power at no load (264Vac)	414mW
Efficiency (115/230Vac, Full load)	87.28%/88.74%
2. Output characteristics	
Line regulation	±0.31%
Load regulation	±0.93%
Ripple (Full load)	4.2V
Over shoot	0%
3. Time sequence (90Vac, Full load)	
Turn on delay time	0.97Sec.
4. Protections	
Short circuit protection	OK
Over voltage protection	OK
Over current protection	OK
Over temperature protection	OK

Disclaimer

On-Bright Electronics reserves the right to make corrections, modifications, enhancements, improvements, and other changes to its documents, products and services at any time and to discontinue any product or service without notice. Customers should obtain the latest relevant information before placing orders and should verify that such information is current and complete.

This document is under copy right protection. None of any part of document could be reproduced, modified without prior written approval from On-Bright Electronics.