

**Subject**  
**OB3332 Demo Board Manual**

Board Model:LD50V150mA3332 1620  
Doc. No.: OB\_DOC\_DBM\_D\_333200



**45mm(D) \* 22mm(W) \* 19mm(H)**

**Key features:**

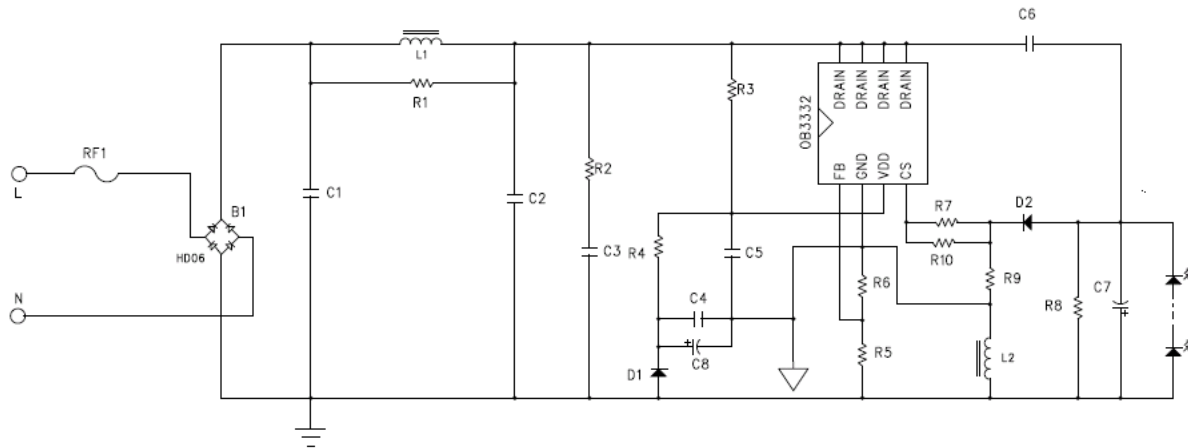
- Input: 100~132Vac/60HZ
- Non-isolated buck-boost application
- PF≥0.7@Vo=50V
- LED short protection, Over temperature protection.
- Thermal foldback

**Revision History**

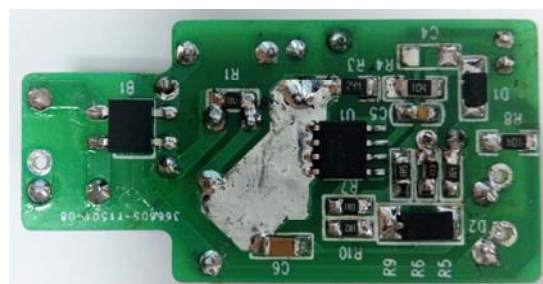
Revise Date	Version	Reason/Issue
2016/5/19	00	First issue

# 1 Board Information

## 1.1. Board Schematic



## 1.2. Module Snapshot

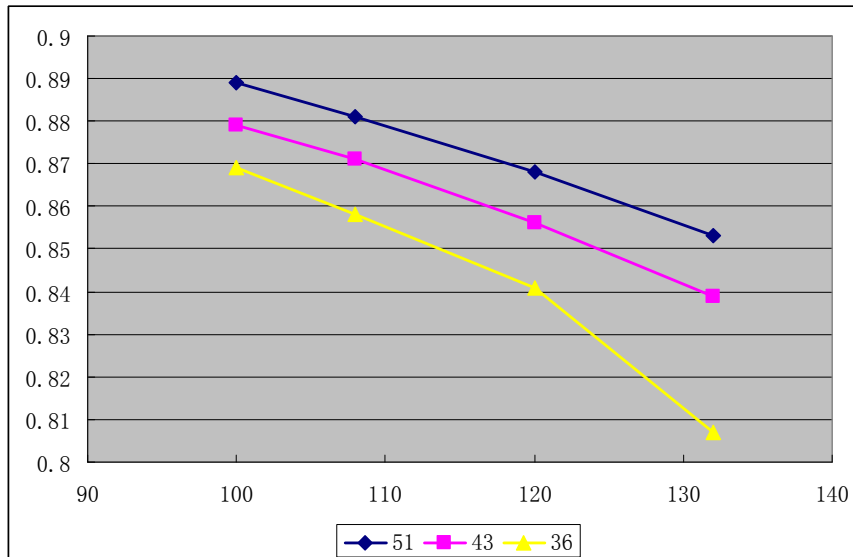
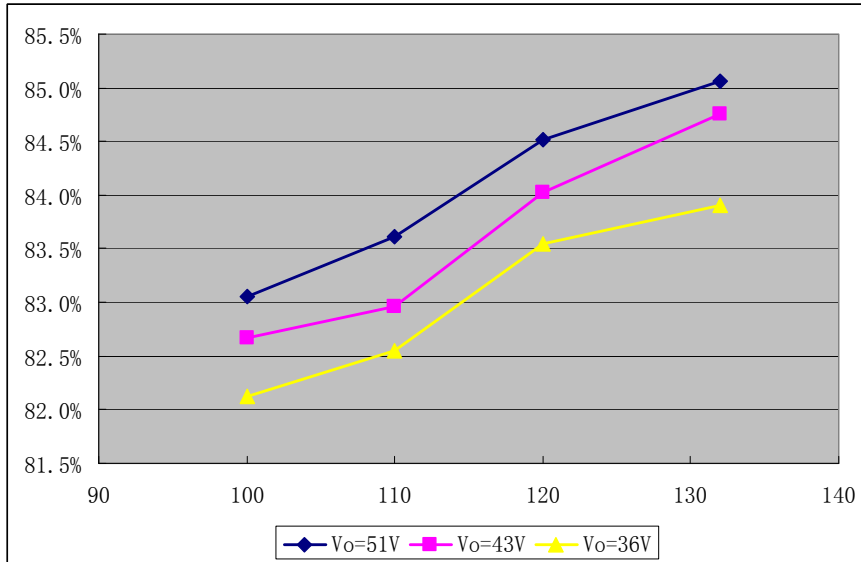


Size: 45mm(L) \* 23mm(W)\*12mm (H)

## 2. Performance Evaluation

### 2.1. Input Characteristics

#### 3.1.1 Efficiency and PF



### **Disclaimer**

On-Bright Electronics reserves the right to make corrections, modifications, enhancements, improvements, and other changes to its documents, products and services at any time and to discontinue any product or service without notice. Customers should obtain the latest relevant information before placing orders and should verify that such information is current and complete.

This document is under copy right protection. Non of any part of document could be reproduced, modified without prior written approval from On-Bright Electronics.