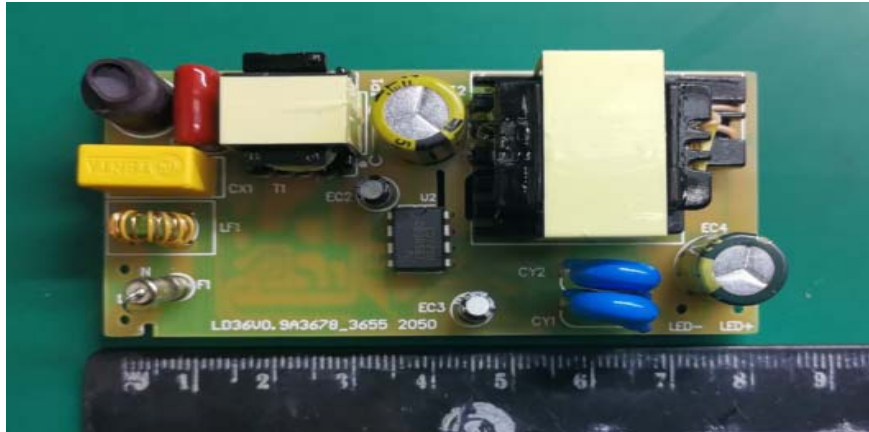


Subject
OB3678P+OB3655T Demo Board Manual

Board Model: LD36V0.9A3678_3655 2050

Doc. No.: OB_DOC_DBM_3678P+3655T01



80mm (L) *40mm (W) *20mm (H)

Key Features

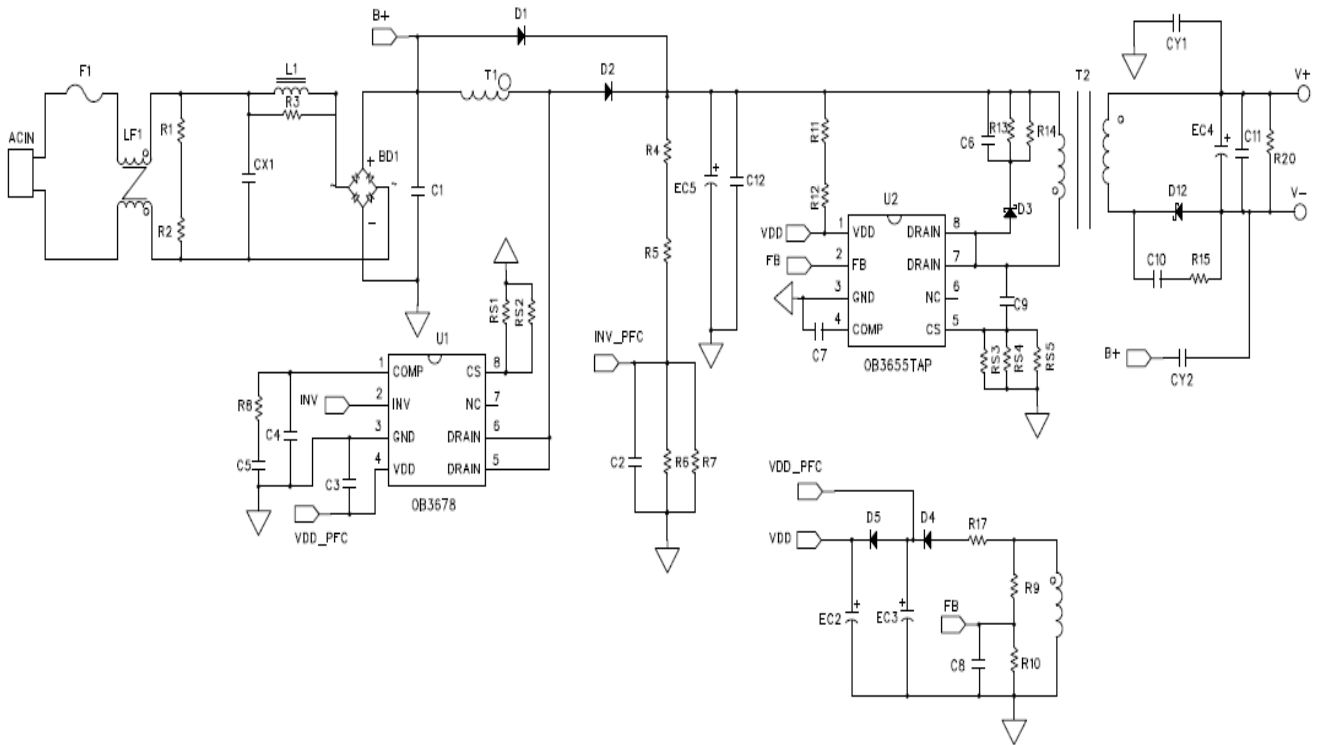
- High efficiency isolated application
- High PF and Low THD(<10%) without low Frequency current Ripple
- Accurate primary-side constant current controller without secondary side control and opto-coupler
- High precision output current regulation and Line current regulation
- High-voltage start-up (<0.5S)
- Low standby (<0.5W)
- Audio noise free operation
- Short circuit protection, open circuit protection and over temperature protection

Revision History

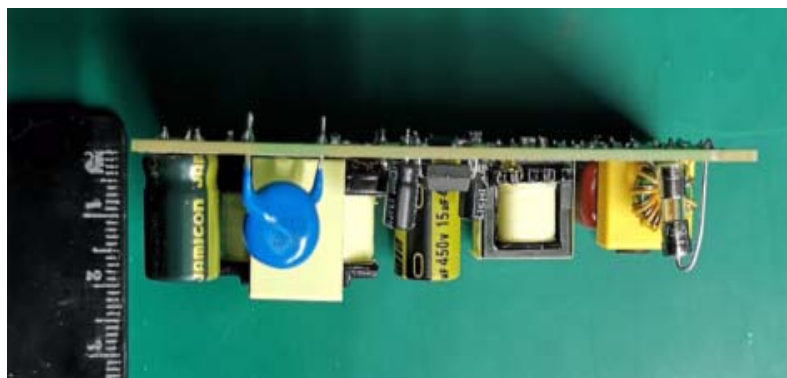
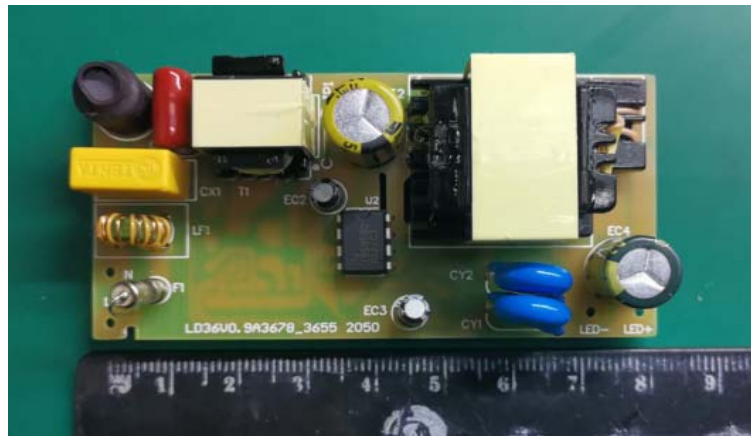
Revise Date	Version	Reason/Issue
2020-9-10	00	First issue
2020-12-15	01	Performance improve

1 LED Lighting Information

2.1 Schematic



2.2 Module Snapshot



2 Performance Evaluation

Characterization Results Summary

Test Item	Test result
1. Input characteristics	
Efficiency (230 Vac, Full load)	88.46%(40V 0.9A)
2. Output characteristics	
Current overshoot	0%
3. Time sequence (176Vac, Full load)	
Turn on delay time	410mS
4. Protections	
Short Circuit protection	OK
Open Circuit protection	OK
Over Temperature protection	OK

Disclaimer

On-Bright Electronics reserves the right to make corrections, modifications, enhancements, improvements, and other changes to its documents, products and services at any time and to discontinue any product or service without notice. Customers should obtain the latest relevant information before placing orders and should verify that such information is current and complete.

This document is under copy right protection. None of any part of document could be reproduced, modified without prior written approval from On-Bright Electronics.