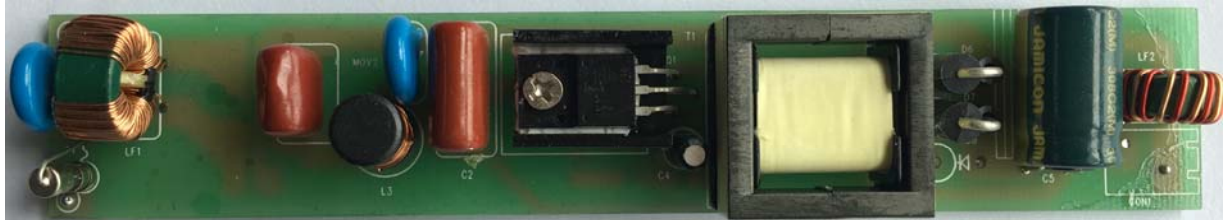


Subject
OB3619A Demo Board Manual

Board Model: LD42V1A3619A 1617
Doc. No.: OB_DOC_DBM_B_3619A00



Key features:

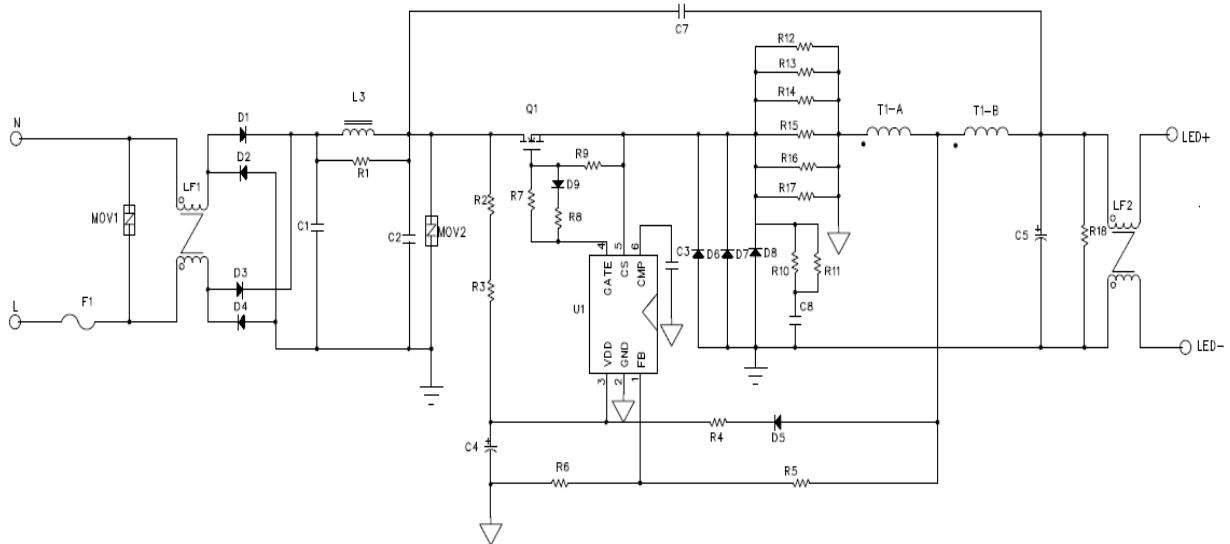
- Single stage PFC structure with non-isolated buck application
- QR mode to achieve high PF(>0.9)
- Lower THD(<15%) @ 90~264Vac Full load
- High efficiency(>85%) application
- High precision constant output current
- Good EMC performance
- Surge pass 2.5Kv
- Lower output short power lose
- LED open/short protection, Over temperature protection.

Revision History

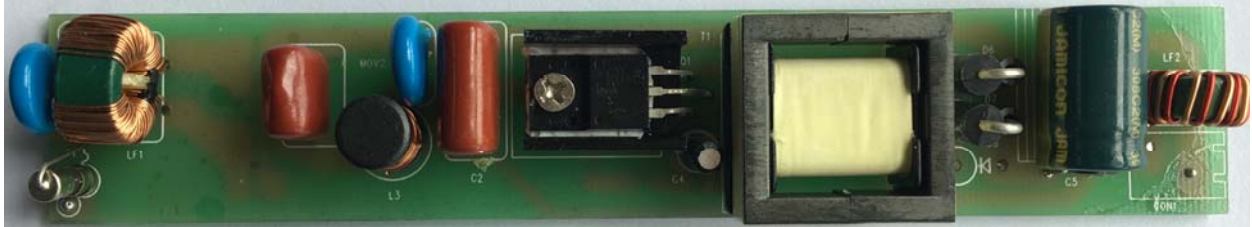
Revise Date	Version	Reason/Issue
2016/04/22	00	First issue

1. Board Information

1.1. Board Schematic



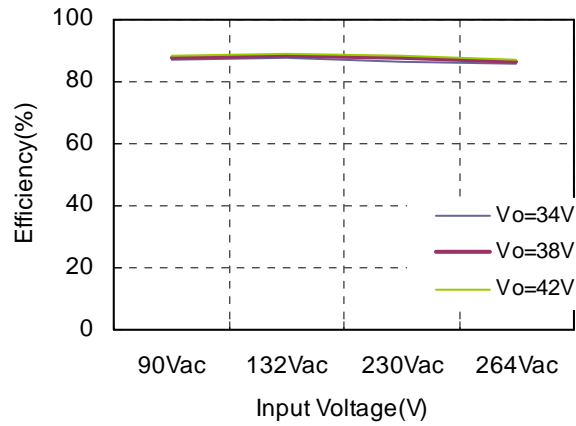
1.2. Module Snapshot



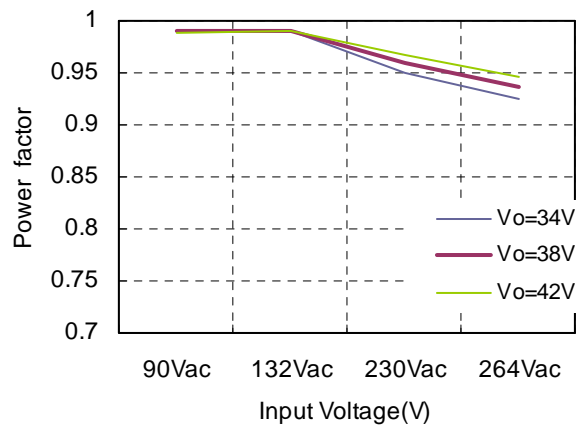
Size: 153mm(L) * 27mm(W) * 14.5mm(H)

2. Performance Evaluation

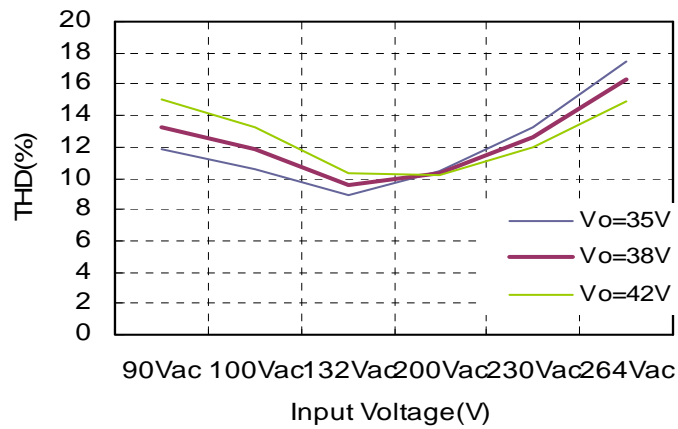
3.1.1 Efficiency



3.1.2 Power factor



3.1.3 Total Harmonic Distribution



Disclaimer

On-Bright Electronics reserves the right to make corrections, modifications, enhancements, improvements, and other changes to its documents, products and services at any time and to discontinue any product or service without notice. Customers should obtain the latest relevant information before placing orders and should verify that such information is current and complete.

This document is under copy right protection. Non of any part of document could be reproduced, modified without prior written approval from On-Bright Electronics.