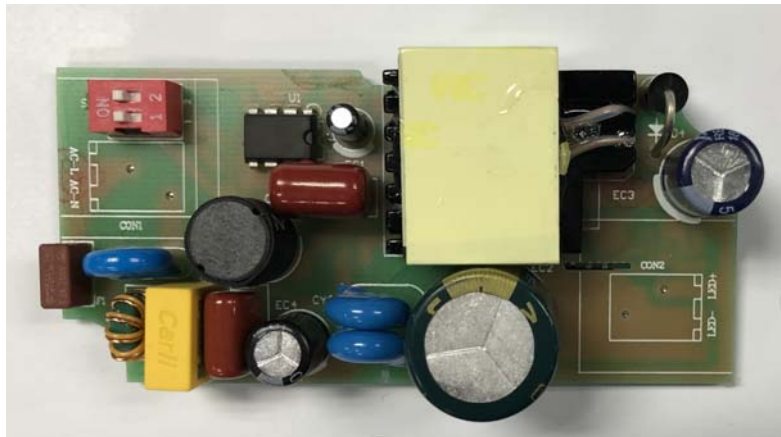


Subject  
**OB3635EV+OB3671 Demo Board Manual**

Board Model: LD42V1A3635\_3671.00

Doc. No.: OB\_DOC\_DBM\_3635EV+367100



**Key Features**

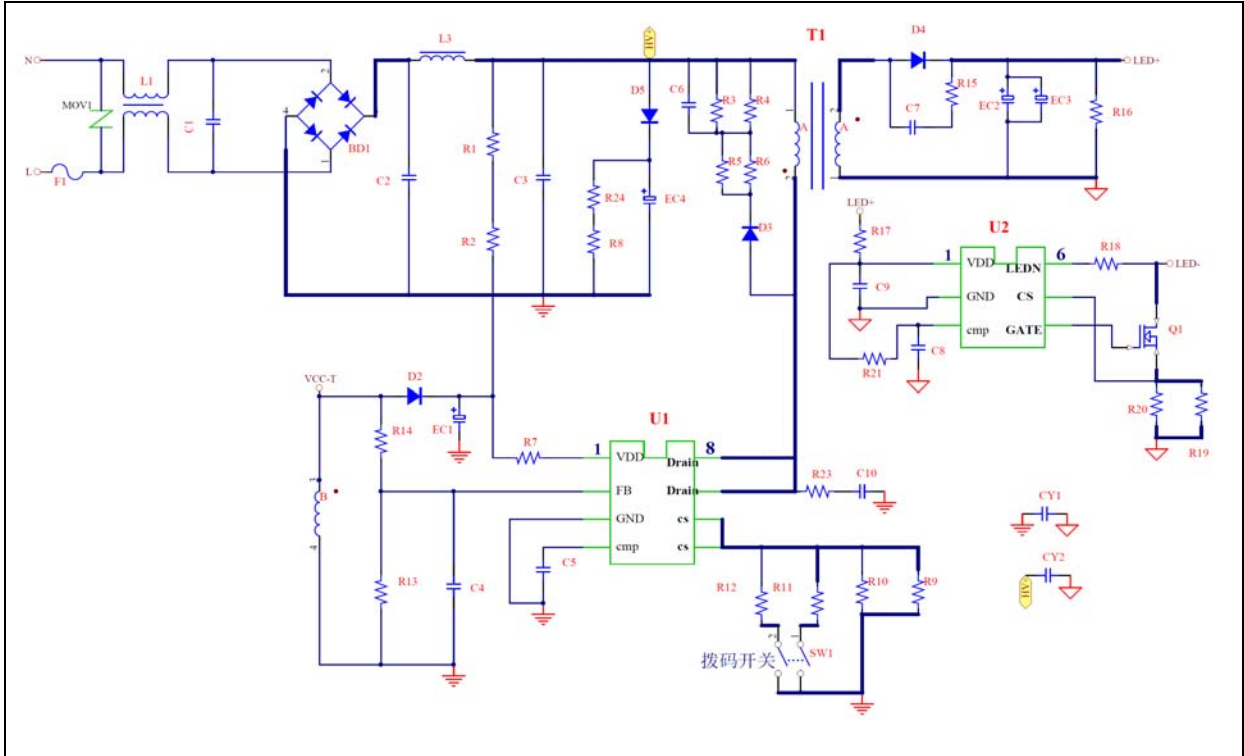
- No visible flicker with 100Hz LED Current Ripple Removal
- Multiple high precision output current regulation
- Power factor >0.95 and THD <10%@Max. load
- Startup time <1S@176Vac
- Short circuit protection and over voltage protection
- EMI meet EN55015

**Revision History**

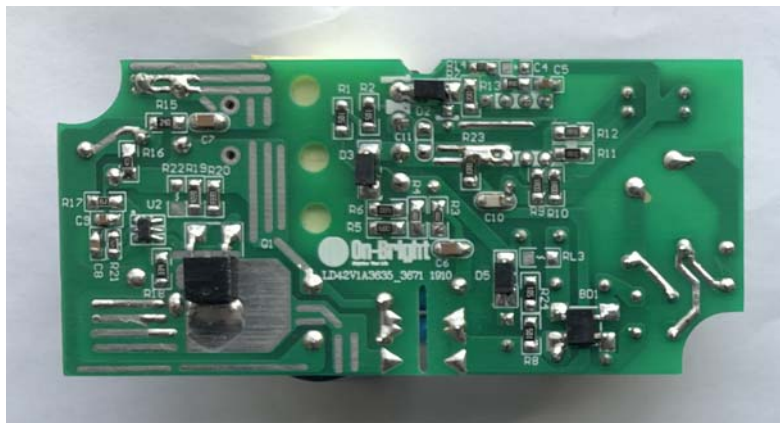
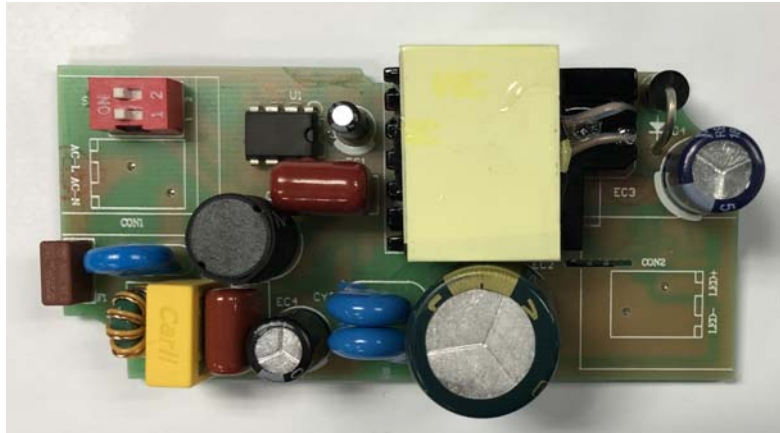
Revise Date	Version	Reason/Issue
2019-3-18	00	First issue

# 1 LED Lighting Information

## 2.1 Schematic



## 2.2 Module Snapshot



## 2 Performance Evaluation

### Performance Highlights

- Multiple high precision output current regulation setting by dial switch SW1
- Efficiency more than 90% @230Vac,Max. load
- Power factor >0.95 @230Vac
- THD <10% @230Vac
- EMI passed EN55015 test with more than 6dB margin.

### Characterization Results Summary

Test Item	Test result
<b>1. Input characteristics</b>	
Efficiency (230Vac,Max. load)	91.2%
<b>2 .Output characteristics</b>	
Current overshoot	0%
<b>3. Time sequence (176Vac,Max. load)</b>	
Turn on delay time	0.734S
<b>4. Power factor and THD</b>	
Power factor (230Vac,Max. load)	0.978
THD (230Vac,Max. load)	6.22%
<b>5. Protections</b>	
Short Circuit protection	Shut down with auto-recovery
Over Voltage protection	Shut down with auto-recovery

### Disclaimer

On-Bright Electronics reserves the right to make corrections, modifications, enhancements, improvements, and other changes to its documents, products and services at any time and to discontinue any product or service without notice. Customers should obtain the latest relevant information before placing orders and should verify that such information is current and complete.

This document is under copy right protection. None of any part of document could be reproduced, modified without prior written approval from On-Bright Electronics.