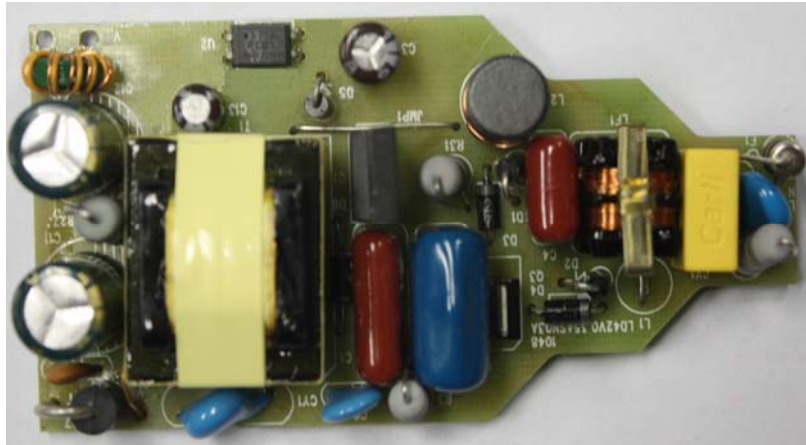


Subject
SN03A Demo Board Manual

Board Model: LED42V0.35A-SN03A.00
 Doc. No.: OB_DOC_DBM_C_SN03AA2



Key features:

- Compatible with TRIAC and electronic dimmers
- Single stage critical conduction mode flyback converter for LED Driver
- Power factor >0.9
- THD meet IEC61000-3-2 Class C
- Short circuit protection
- Meet FCC Part 15 EMI

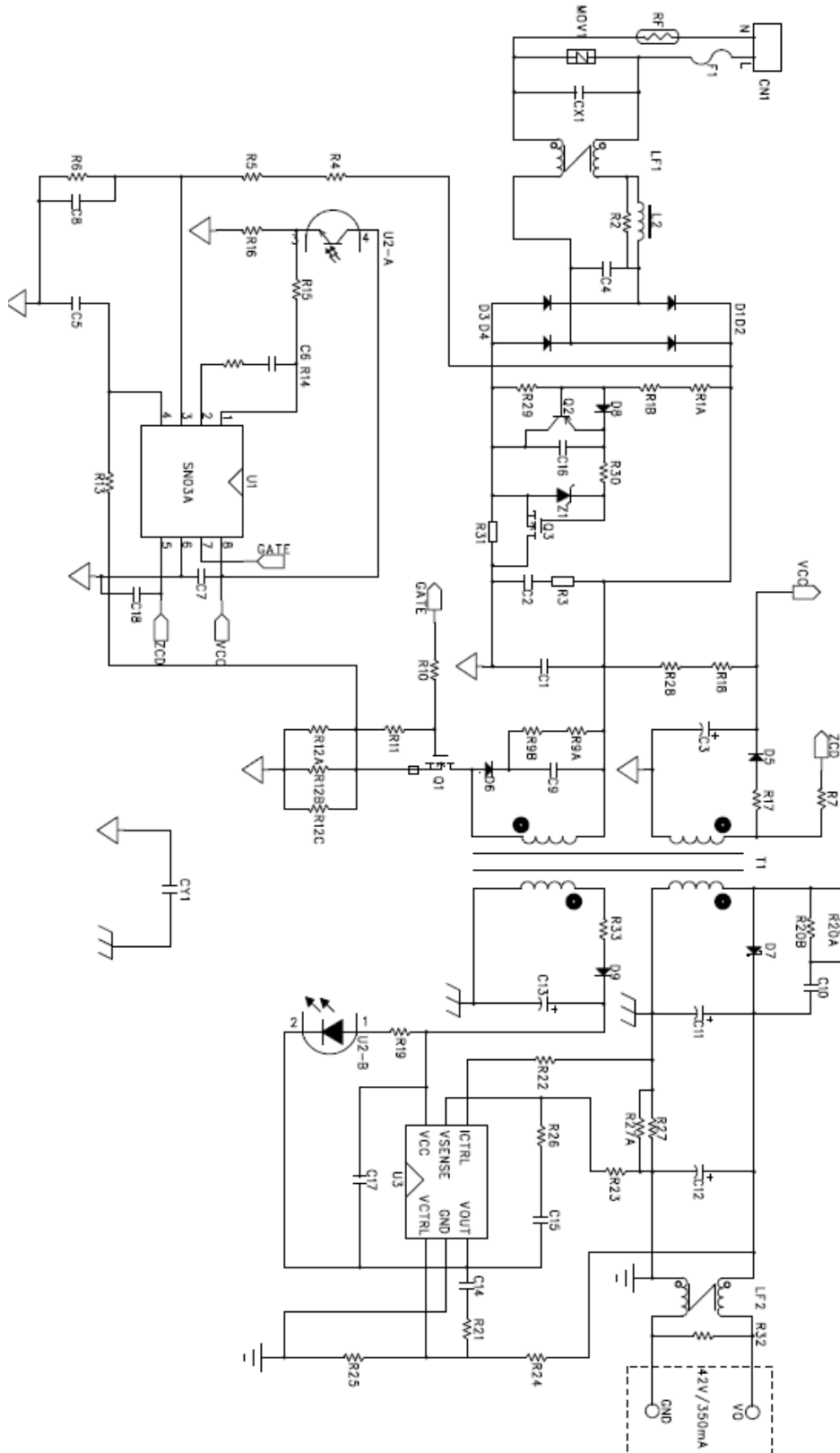
Revision History

Revise Date	Version	Reason/Issue
2010-11-26	A0	First issue
2011-01-25	A1	Updated the BOM
2012-10-29	A2	Performance improve

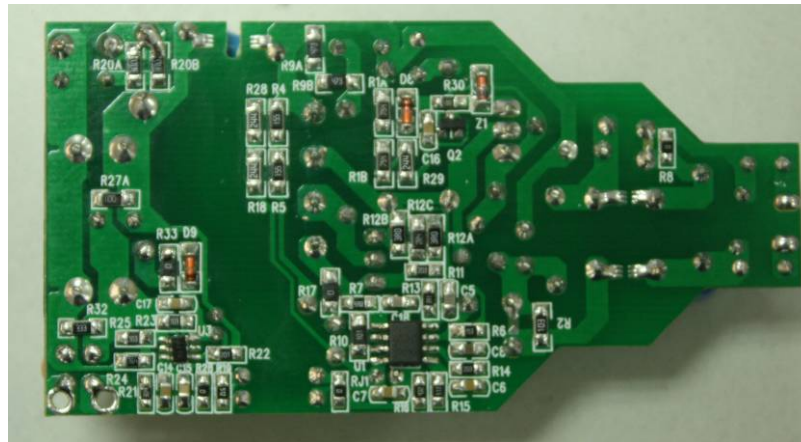
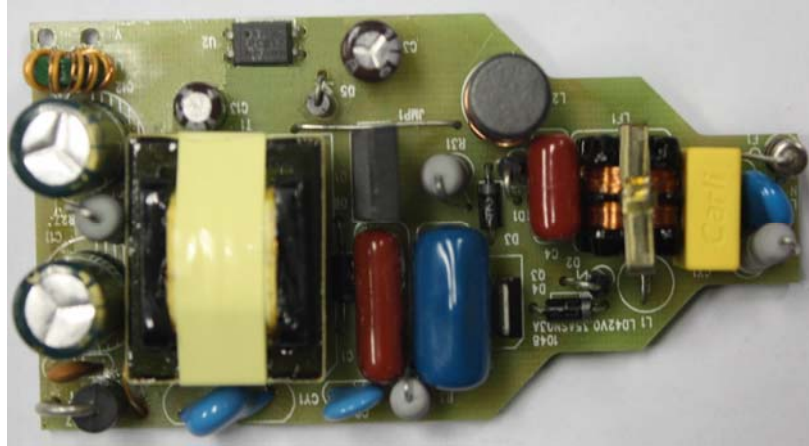
Adapter Module Specification

1. LED Module Information

1.1. Schematic



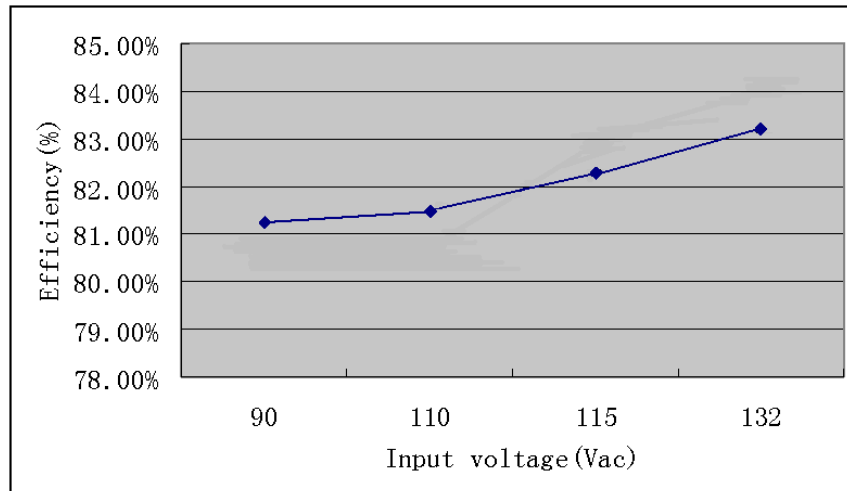
1.2. LED Module Snapshot



SIZE: 85.5mm (L) x44.5mm (W) x23mm (H)

3.1. Input Characteristics

3.1.1. Efficiency



3.1.2. Power Factor at Full load

Table. 1 Power factor

Input voltage	PF	Spec.	Test result
90Vac/ 60Hz	0.975	>0.9	Pass
100Vac/ 60Hz	0.980		
115Vac/ 60Hz	0.980		
132Vac/ 60Hz	0.974		

3.1.3. THD Test at Full load

Table. 2 THD test under 115Vac input condition

Input voltage	N	THD (%)	IEC61000-3-2 Class C Limit	Test result
115V/ 60Hz	2	0.2	< 2.0%	Pass
	3	9.0	<29.5%	
	5	7.4	<10.0%	
	7	4.6	< 7.0%	
	9	2.3	< 5.0%	
	11	1.2	< 3.0%	

Disclaimer

On-Bright Electronics reserves the right to make corrections, modifications, enhancements, improvements, and other changes to its documents, products and services at any time and to discontinue any product or service without notice. Customers should obtain the latest relevant information before placing orders and should verify that such information is current and complete.

This document is under copy right protection. Non of any part of document could be reproduced, modified without prior written approval from On-Bright Electronics.